



# Electrical Safety on the Job Site

## 11 Ways to Build it Safe.

**Everyone on the job site is at risk.**

Electrical currents can cause shocks, fires, explosions, burns, falls which can be fatal or cause serious injury.

Most electrical accidents result from one of the following three factors:

- unsafe equipment or installation,
- unsafe environment, or
- unsafe work practices.



Electrocution is the **3rd** leading cause of worker-related death for construction workers.

## Controlling Top Hazards

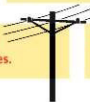
**Check your extension cords and plugs**—a torn jacket, exposed wire at the plug or missing a “ground” pin are quick checks to ensure that the cord is in good working condition.



**Check your tools** for damaged cord, missing ground pin or exposed wires.

**Extension cords** should be placed where they will not get damaged.

**De-energize circuits.** Use effective lockout-tagout procedures.



**Stay clear of overhead wires.**

**Do not overload circuits.**

**Test your Ground Fault Circuit Interrupter (GFCI)** outlet to ensure its proper operation with an approved tester.



**Test all circuits** to ensure the absence of voltage with the proper meter.



**Close electrical panels**—never leave an open panel so that unqualified persons have access.

**Temporary lighting** should be elevated and include protective cages around the bulbs.

**Stay dry.**

Wet conditions—standing in water, wearing wet clothing, working in high humidity, and perspiring can increase electrocution risk.



[www.electricalalliance.org](http://www.electricalalliance.org)

Twitter: @DC\_ElectricalAlliance Facebook: www.facebook.com/electricalalliance

Sources:  
OSHA: <https://www.osha.gov/electrical-safety>  
and <https://www.osha.gov/publications/electrical-safety>  
National Institute of Occupational Safety and Health  
<https://www.cdc.gov/niosh/docs/2009-115/pdfs/2009-115.pdf>

**THE ELECTRICAL ALLIANCE**

National Electrical Contractors Association and Local 25 IBEW

200 Contractors and 8,000 Electricians United for Quality.

